



PRODUCT CATALOGUE



TECHNOLOGY & INNOVATION



SHEARAIL® PUNCHING SHEAR REINFORCEMENT



The only punching shear system approved by both CARES & BBA

Shearail® is a certified pre-fabricated punching shear reinforcement system for flat, piled and post-tensioned slabs. It is designed to increase construction speed, improve build quality and reduce dependency on skilled labour – significantly reducing on-site costs.

It is the only proven punching shear solution with both CARES Technical Approval and BBA Certification.

Shearail® punching shear reinforcement system, which is BS 8110 and EC2 compliant, enables site work to be carried out far more effectively and efficiently than traditional loose links, making it ideal for complex project management.

- Easy to position & fix
- Design to BS 8110 & Eurocode 2
- Free design service, including link conversions

EGCODORN SHEAR LOAD DOWEL SYSTEMS



Egcodorn is a range of shear dowel systems that can accommodate most static and dynamic loads. Egcodorn stainless steel dowel systems are suitable for transverse force transmission for static and dynamic loads. The Egcodubel dowel system guarantees that transverse forces at expansion joints are transmitted without impeding the horizontal movement of each component.

Egcodorn transverse force dowel

Egcodorn is a high-performance, corrosion-proof transverse shear force dowel which transfers maximum loads whilst having a minimal component thickness. When using Egcodorn, it is not necessary to use extensive formwork for expansion joints. The unique corrosion protection system and the use of high-quality materials guarantee the highest safety and reliability.

Expansion joints allow for movement between adjacent concrete elements caused by physical changes (thermal expansion, shrinking, material creep). The primary application of the Egcodorn stainless steel dowel system is to carry loads across expansion joints in which shear forces occur.

Egcodorn summary:

- Optimum load transmission into the concrete
- Transfers maximum loads whilst having a minimum component thickness
- Easy, rapid and cost efficient joint production
- Allows for transmission of static and dynamic loads
- Highest corrosion protection due to use of high quality stainless steel
- Fire resistance Class R120
- Custom designs available upon request

Egcodubel

Egcodubel for expansion joints is a system for transmission of the transverse forces in joints of plate-shaped structural elements. Dowels are mainly used for subordinate structural elements (e.g. ground bearing slabs), in which expansion joints must only allow for transverse forces.

- High steel quality
- Optimum corrosion protection
- Egcodubel available with or without sleeve

EGCOBOX® THERMAL BREAK BALCONY CONNECTORS



In modern architecture cantilevers are a very popular construction feature. EgcoBox® is a certified insulated balcony and cantilever connection system for preventing thermal bridging between cantilevered components such as balconies, walls and corbels, and the building frame.

EgcoBox® has been an approved certificated system since 1997 for preventing thermal bridging between buildings and cantilevered components such as balconies, consoles, walls etc, and was originally awarded BBA certification in 2008.

The EgcoBox® system is impressive in its versatility and has been approved by the construction supervising authorities in the United Kingdom.

The benefits of EgcoBox®:

- Reduces thermal bridging in accordance with building regulations.
- Provides continuity of reinforcement and reinforcement properties between building components.
- Reduces vertical deflection of the cantilever.
- Non-standard sizes or elements with special loading or static calculations are available.
- Elements are produced to order and supplied direct to site with short lead times.

In addition to the well-known and popular standard elements it is also possible to design and produce EgcoBox® special element in-line with the individual static and geometrical requirements of your site. Cantilever connectors are manufactured according to the needs of each construction project and elements are supplied directly to the construction site.

Product:

RSH STARTER PACKS

RSH STARTER PACKS



Recostal® Starter Packs type RSH meet the requirements of DIN EN 1992-1-1 for the highest surface category "key profiled" in the case of transverse loads.

Advantages

- Strong, robust galvanised sheet metal starter packs, dimensionally stable
- Cost and time effective installation, starter packs are simply nailed to the formwork
- Easy removal of the sheet metal covers due to their special design
- Trapezoidally profiled box for excellent bond
- Various possible combinations provide a solution for all common installation details
- Meets the requirements of Eurocode 2

Product:

MAX FRANK FORMWORK TECHNOLOGIES

STREMAFORM® PERMANENT FORMWORK



Stremaform® is a permanent formwork system designed for use in concrete structures as a solution for construction joints, stop-ends and expansion joints. It is the ideal self-supporting, lost formwork for producing quality joints in reinforced concrete.

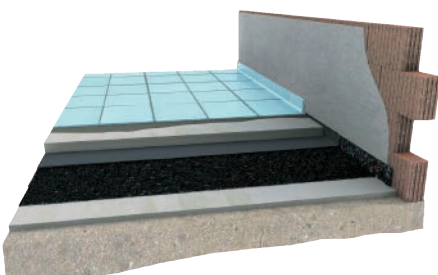
Through its method of fabrication, Stremaform® is resistant to deflection. It is an expanded open metal mesh, embedded inbetween a reinforcing steel grid – resulting in a very high shear strength which is identical to that of monolithic concrete.

Stremaform® resolves many issues that standard formwork erection for stop ends and construction joints cannot. It is designed, tailored and prefabricated in Max Frank's factory and supplied to the construction site ready for installation.

Product:

DAMTEC® IMPACT SOUND IMPROVEMENT UNDERSCREED

IMPACT SOUND IMPROVEMENT FOR UNDERSCREED



SDG work as partners promoting and distributing the Damtec® underscreed products in Ireland.

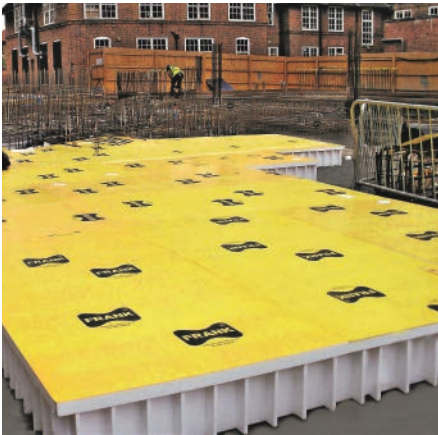
DAMTEC® is the product line of KRAIBURG Relastec GmbH & Co. KG especially developed for impact sound insulation and vibration absorption.

Quietness is a primary basic need and of great importance in our time. An effective impact and footfall sound reduction helps improving quality of life, an efficient vibration isolation provides living comfort and good working atmosphere. Under the brand name DAMTEC® our customers find a wide range of products for acoustic insulation as well as for vibration deadening for different requirements and application areas.

Product:

MAX FRANK FORMWORK TECHNOLOGIES

PECAVOID® GROUND HEAVE SOLUTION



Piled foundations and slabs can be affected by ground movement caused by volume changes in swelling clays due to clay type and moisture variation. Changes in the weather and vegetation also often affect ground moisture levels.

Pecavoid® is the BBA approved cellular void former from Max Frank, designed to combat the effects of clay heave on foundations.

Widely used in the construction of commercial buildings, Pecavoid® is certified by the BBA, meets NHBC technical requirements and is accepted by major warranty schemes for residential housing developments.

Product:

ARCHITECTURAL FORMLINERS

PIERI FORMLINERS



Pieri formliners enable you to create an artistic, permanent impression providing a unique multi dimensional aspect to your concrete. Alternatively, formliners can be used to effectively reproduce masonry or other traditional finishes to blend new construction with existing surroundings.

Whatever your design requirement, Grace Pieri elastomeric formliners provide practical economic and aesthetic solutions for building facades, internal walls, bridges, sea walls and other areas of exposed concrete.

INSITEX® FORMWORK LINERS



Insitex® formliners provide a low cost means of applying appealing textured finishes to a wide variety of concrete structures. Manufactured from PVC, the formliners are lightweight and easy to install – improving construction speed and reducing man-hours. Insitex® is ideal for use on smaller applications and individual structures.

Insitex® formliners from Max Frank offer a diverse range of textures and finishes, including abstract, masonry & brick, timber or vertical-ribbed profiles.

Insitex® panels are supplied in standard widths of 600mm and heights of up to 7m.

Product:

MAX FRANK FORMWORK TECHNOLOGIES

ZEMDRAIN® CONTROLLED PERMEABILITY FORMLINER



The primary cause of concrete degradation is the poor quality of the outer 20mm of the surface due to the use of oiled impermeable formwork. The resulting surface has increased porosity and numerous blowholes and reduced durability.

Zemdrain® controlled permeability formwork (CPF) liners can be used as an Additional Protective Measure (APM). Zemdrain CPF liners are attached to the formwork face and during the concreting process remove excess air and water from the formwork/concrete interface. The resulting high quality concrete surface has significantly increased durability properties.

Product:

DEFLEX MOVEMENT JOINTS

MECHANICAL MOVEMENT JOINTS



SDG are proud to be the distributor of movement joints manufactured by Deflex Fugensysteme GmbH – they are one of the key global names when it comes to the production of joint profiles.

They have developed an innovative range of all-metal, metal and Nitriflex units, and specialise in finding solutions for individual customised projects

We can supply all kinds of construction joints and offer solutions in all the following fields:

- Joint profiles
- Wall profiles
- Floor profiles
- Ceiling profiles

Product:

GUMBA BRIDGE BEARINGS

REINFORCED ELASTOMERIC BEARINGS ACC/ EN1337-3



Reinforced elastomeric bearings are made of a special rubber blend and are equipped with reinforcement steel sheets during the manufacturing process, the so called vulcanisation. The steel sheets provide the necessary stiffness.

Reinforced elastomeric bearings stand out through their low maintenance and durability. Besides that, some types can be used under certain conditions without any additional steel structure (restraining). The elastomeric part of the bearing is elastically deformable.

The deformation rate in vertical direction (deflection) under permanent load is calculable and stays constant. The influences of live loads are generally small and the additional temporary deflections caused by live loads are of a minor degree and will cause no problems for most structures.

POT BEARINGS ACC/ EN1337-5



Pot bearings have been used for many years and are a well proven bearing type.

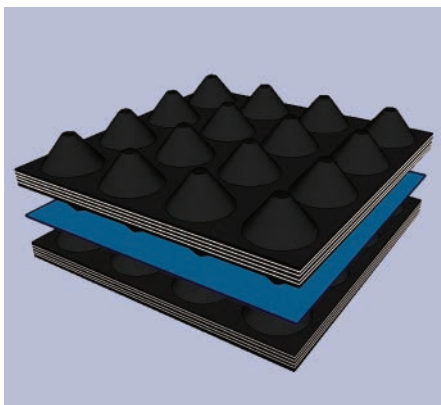
Through the combination of a non reinforced elastomeric bearing (natural rubber) in a steel housing, which is closed on all sides (pot), it is possible to transmit high vertical loads on a relative small area. The dimensions of the pot bearing depend on the permissible elastomer pressure as well as especially on the permissible concrete pressure.

Pot bearings are designed and manufactured according to EN 1337-5 and are labelled with the relevant CE marking.

Product:

CALENBERG BEARINGS

ANTI-VIBRATION AND SLIDING BEARINGS



SDG together with Calenberg Ingenieure are dedicated to the refinement of building construction.

In addition to products for static mountings of components, the product range also comprises unique elastomeric materials for special fields of application in sound and vibration insulation and reduction. Calenberg expertise reduces the risk of building failure thereby reducing maintenance costs, improves the quality of life and protects against environmental effects such as traffic noise, vibration and footstep sound.

All our products are scientifically based and the measured physical values and data of the products are proved by official and independent testing institutes.

Product:

DISPOSABLE FORMWORK SOLUTIONS

IGLU'® VENTILATED UNDER FLOOR CAVITIES



Disposable formwork for ventilated under-floor cavities.

Iglu'® is a market leading product that was created and patented for the realisation of sanitary spaces, ventilated cavities, under-floor cavities, ventilated floors and roofs during the construction and restructuring of civil and industrial buildings. This result of an ingenious idea dating back to 1993 considerably improved building methods. The innovative capacity of Iglu'® has received numerous successes and recognitions on a national and international level, quickly confirming it as a product of excellence in the building world.

The modular, plastic Iglu'® formworks, placed side by side in sequence according to a predefined direction, make it easy to quickly create a self-supporting pedestrian platform above which a layer of is cast in order to easily and economically create a ventilated slab placed on pillars with the below cavity area available for the passage of systems but above all ventilated to counteract rising humidity and radioactive gases.

U-BOOT BETON® LIGHTENED VOID SLABS



Disposable formwork for two-way lightened voided slabs in reinforced concrete cast on site.

U-Boot Beton® is a recycled polypropylene formwork that was designed to create lightened slabs and rafts.

The use of U-Boot Beton® formwork makes it possible to create mushroom pillars, with the possibility to have the mushroom in the thickness of the slab.

Thanks to the conic elevator foot, immersing the U-Boot Beton® formworks in the concrete casting will create a gridwork of mutually perpendicular beams closed from the bottom and the top by a flat plate that is created with a single casting; this results in considerable reduction in the use of concrete and steel.

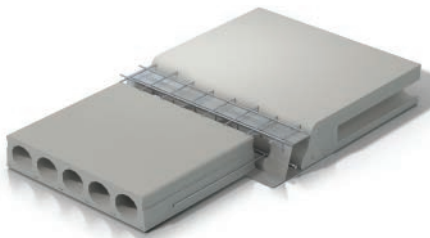
U-Boot Beton® is used to create slabs with large span or that are able to support large loads without beams.

Light and quick and easy to position, thanks to their modularity the designer can vary the geometric parameters as needed to adapt to all situations with great architectural freedom.

Product:

PIEKKO DELTABEAM®

HOLLOW STEEL CONCRETE COMPOSITE STRUCTURAL BEAM



DELTABEAM® Slim Floor Structure allows you to build open spaces – even with architecturally demanding shapes. Compatible with precast and cast-in-situ slabs as well as any type of columns, DELTABEAM® makes your construction process faster and more efficient.

Peikko's DELTABEAM® Slim Floor Structure is a flexible solution always tailored to the customer's needs. It enables slender and light structural solutions that provide savings in terms of volume and costs.

DELTABEAM® can be connected to concrete, steel, or composite columns by using Peikko's innovative solutions, such as Hidden Corbels, Anchor Bolts, or Welding Plates.

source
supply
innovate



Technology
& Innovation



Acoustic
& Vibration
Control



Construction
Accessories



Precast
Accessories



Liquid
Waterproofing

Trusted Experts across the construction industry for
Acoustics, Precast, Construction Accessories, Innovation & Waterproofing



Head Office:

21 Tullygoonigan Industrial Est., Moy Road, Armagh, BT61 8DR

Tel: +44 (0)28 37528 999 | **Fax:** +44 (0)28 37528 928

ROI Office:

JFK House, Unit 3, John F Kennedy Industrial Est., Bluebell, Dublin 12

Tel: +353 (0) 1 440 8680

Email: sales@sdg.ie | **Web:** www.sdgconstructiontechnology.com

