

# Bespoke Couplers

## Female Double Ended



## Male Double Ended

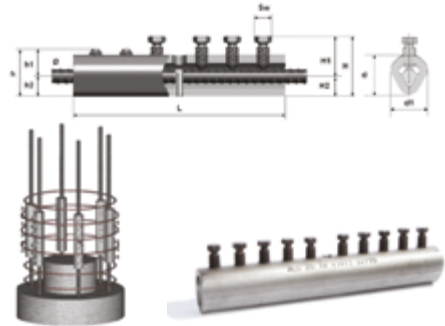


## Alligator Splice Off Couplers

The Alligator Couplers are used for splicing any grade or profile of reinforcing bar. These couplers are made for reinforcement steel with diameters in the range of 10mm to 40mm. Connection is made by inserting bars into both ends of the coupler. The breaking bolts are then screwed by hand and tightened by ratchet wrench until bolts shear off. These couplers can be used in particular cases to replace the damaged reinforcements with new ones and to connect to the old structure.

### Advantages:

- No need for threading or any other bar preparation
- These are fast (simple) easy to use
- No special skilled labor required
- No welded components
- Performs as a continuous piece of rebar
- Allows for easy visually inspection



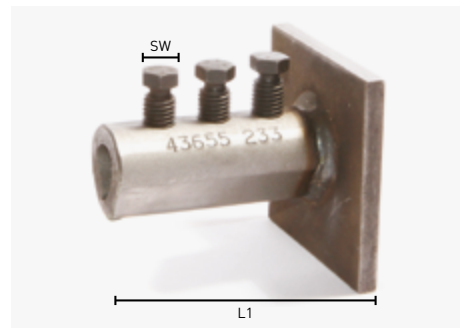
PRODUCT CODE	BAR DIA. (MM)	NO. OF BOLTS	BOLT THREAD	L (MM)	D (MM)	D1 (MM)	H (MM)	H1 (MM)	H2 (MM)	H (MM)	H1 (MM)	H2 (MM)	SW (MM)	TORQUE BOLTS (NM)
ALC10	10	6	M12	160	35	33	48	35	13	36	23	13	13	90 - 99
ALC12	12	6	M12	180	35	33	51	35	16	40	24	16	13	90 - 99
ALC14	14	8	M12	230	40	36	57	39	18	45	27	18	13	90 - 99
ALC16	16	8	M12	230	40	36	57	39	18	45	27	18	13	90 - 99



PRODUCT CODE	BAR DIA. (MM)	NO. OF BOLTS	BOLT THREAD	L (MM)	D (MM)	D1 (MM)	H (MM)	H1 (MM)	H2 (MM)	H (MM)	H1 (MM)	H2 (MM)	SW (MM)	TORQUE BOLTS (NM)
ALC18	18	10	M12	260	44	42	60	40	20	49	29	20	13	90 - 99
ALC20	20	10	M16	260	47	44	65	44	21	54	33	21	17	90 - 99
ALC22	22	10	M16	330	53	50	68	42	26	58	32	26	17	175 - 192
ALC25	25	12	M16	390	56	52	75	45	30	63	33	30	17	175 - 192
ALC28	28	12	M20	420	66	62	90	60	30	75	45	30	22	355 - 405
ALC32	32	14	M20	480	73	68	91	60	31	77	46	31	22	355 - 405
ALC36	36	16	M20	540	79	73	99	64	35	85	50	35	22	355 - 405
ALC40	40	18	M20	580	79	73	103	67	36	85	49	36	22	355 - 405

## Alligator Coupler with Plate

The plate is designed to ensure dead end SW embedment for reinforcement steel bars in concrete. This helps to reduce the congestion and simplify the placement of reinforcement bars by removing the need for hooked ends.



PRODUCT CODE	BAR DIA. (MM)	NO. OF BOLTS	TORQUE BOLTS(NM)	SW (MM)	L (MM)
BCSOP10	10	3	90 - 99	13	88
BCSOP12	12	3	90 - 99	13	98
BCSOP14	14	4	90 - 99	13	123
BCSOP16	16	4	90 - 99	13	123
BCSOP20	20	5	90 - 99	13	150
BCSOP22	22	5	175 - 192	17	175
BCSOP25	25	6	175 - 192	17	205
BCSOP32	32	7	355 - 405	22	255
BCSOP36	36	8	355 - 405	22	285
BCSOP40	40	9	355 - 405	22	305